

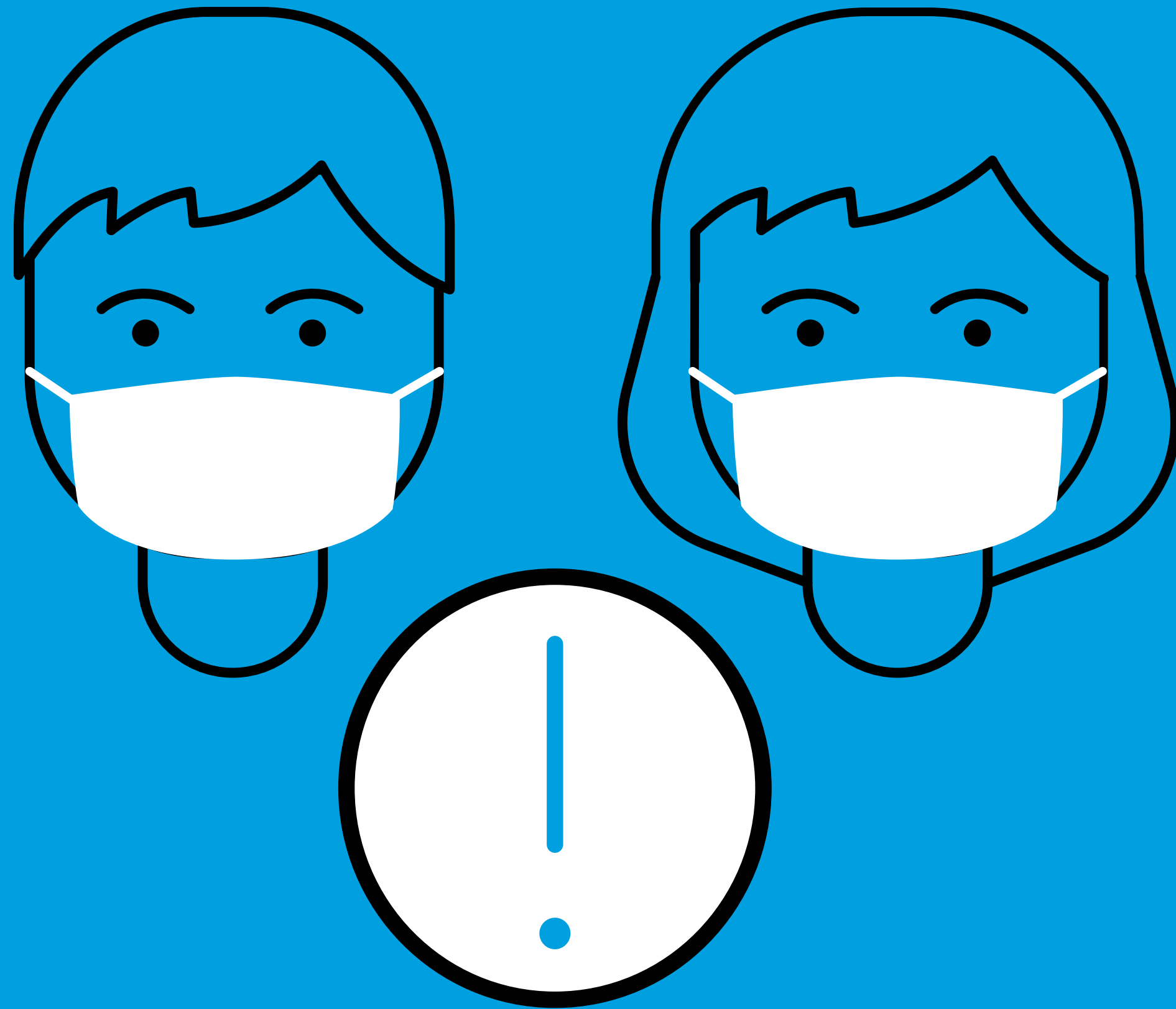
**NOS PRINCIPALES MESURES SANITAIRES**

**OUR MAIN SANITARY MEASURES**

**NOS PRINCIPALES**

**MESURES SANITAIRES**

**OUR MAIN SANITARY MEASURES**



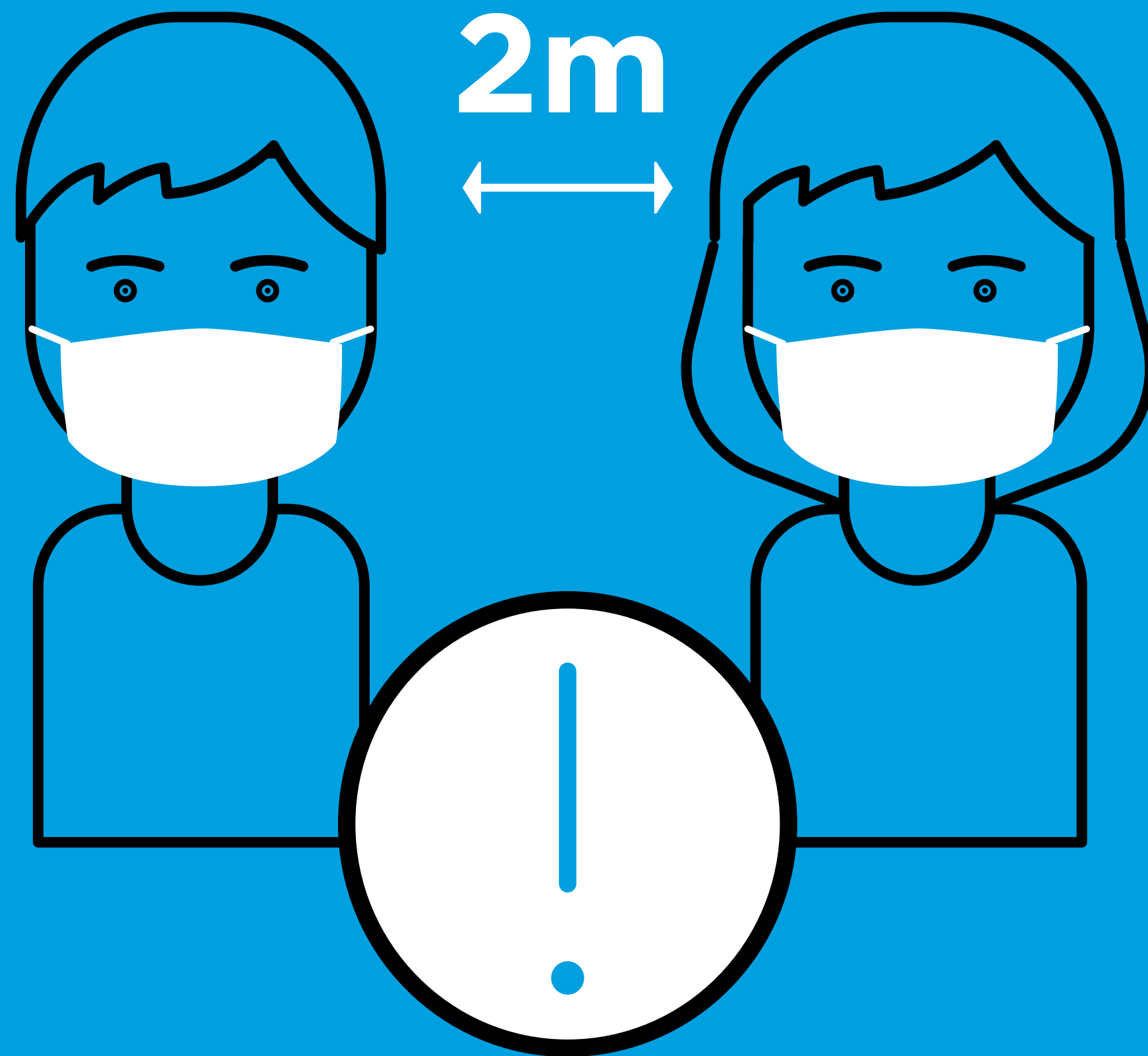
**PORT DU MASQUE OBLIGATOIRE**

**DANS TOUT LE THÉÂTRE**

**(AUSSI PENDANT LES REPRÉSENTATIONS)**

**WEAR YOUR MASK AT ALL TIMES**

**(ALSO DURING THE PERFORMANCES)**

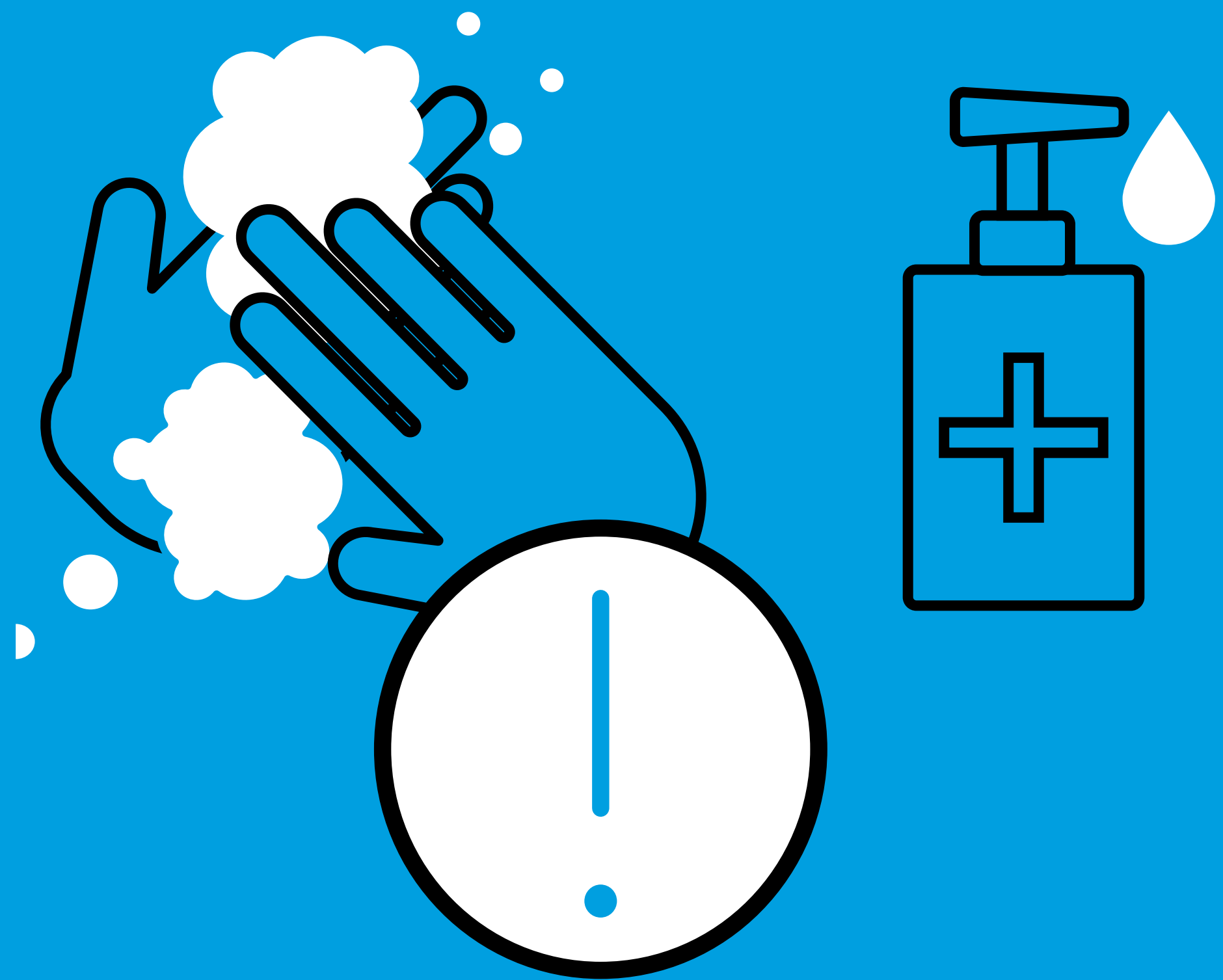


**VEUILLEZ RESPECTER LES RÈGLES  
DE DISTANCIATION PHYSIQUE**

**PLEASE RESPECT PHYSICAL  
DISTANCING GUIDELINES**

**NOS PRINCIPALES MESURES SANITAIRES**

**OUR MAIN SANITARY MEASURES**

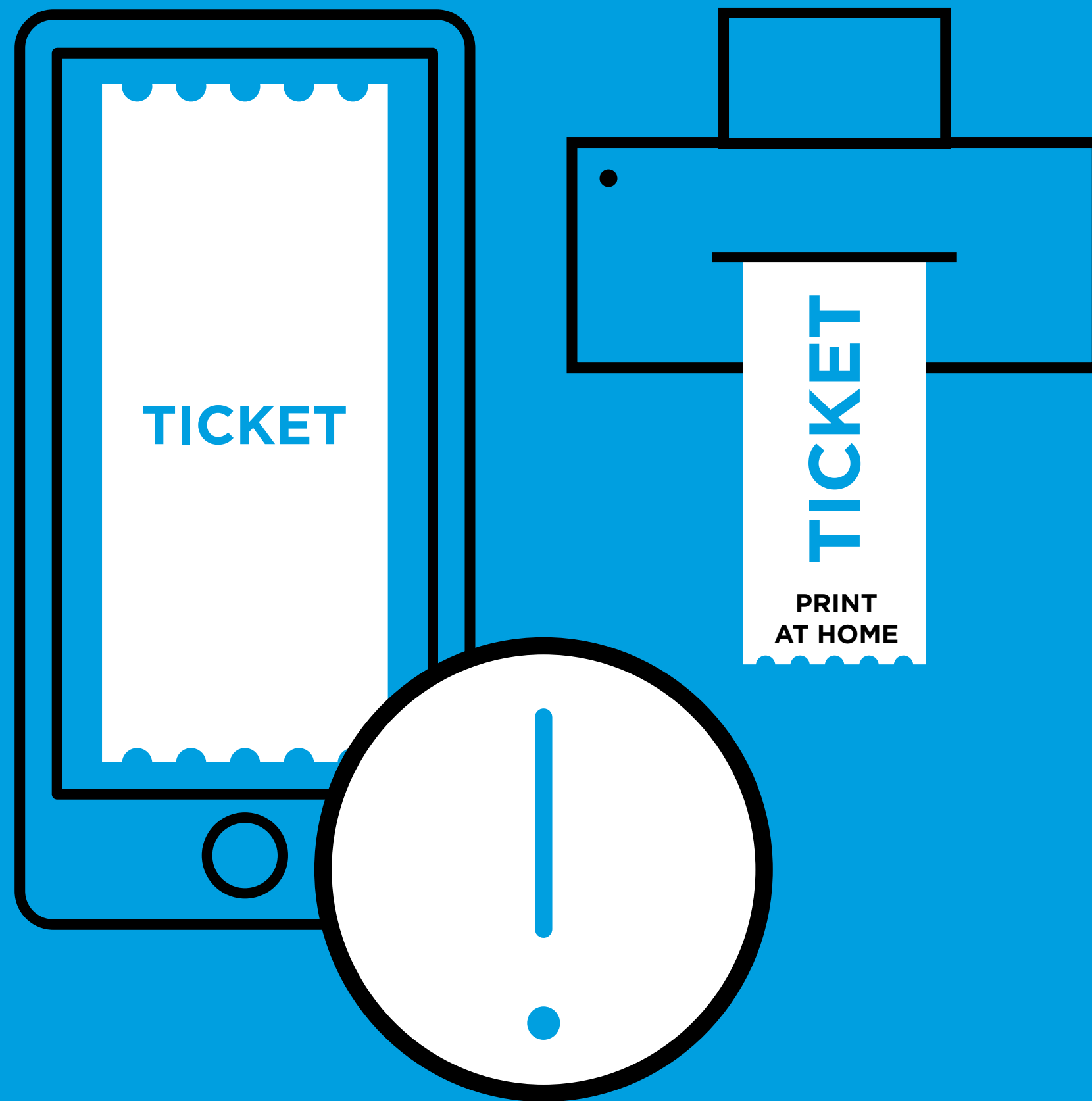


**DE LA SOLUTION HYDROALCOOLIQUE  
EST À VOTRE DISPOSITION**

**DISINFECTANT DISPENSERS  
ARE AT YOUR DISPOSAL**

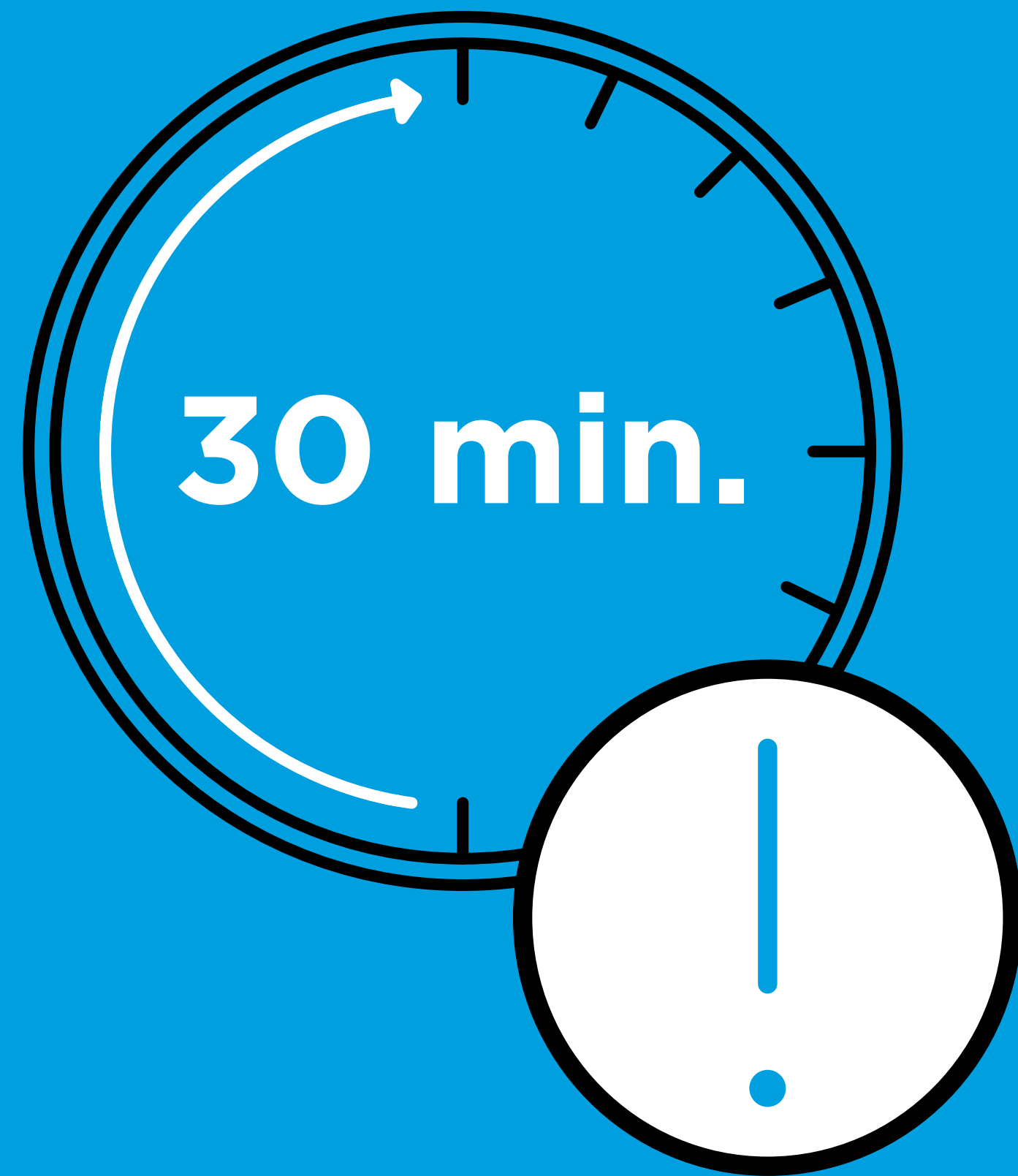
**NOS PRINCIPALES MESURES SANITAIRES**

**OUR MAIN SANITARY MEASURES**



**OPTEZ POUR L'OPTION PRINT AT HOME  
OU TÉLÉCHARGEZ VOTRE TICKET  
SUR VOTRE SMARTPHONE**

**PRINT YOUR TICKETS AT HOME  
OR DOWNLOAD THEM  
TO YOUR SMARTPHONE**



**OUVERTURE DES PORTES**

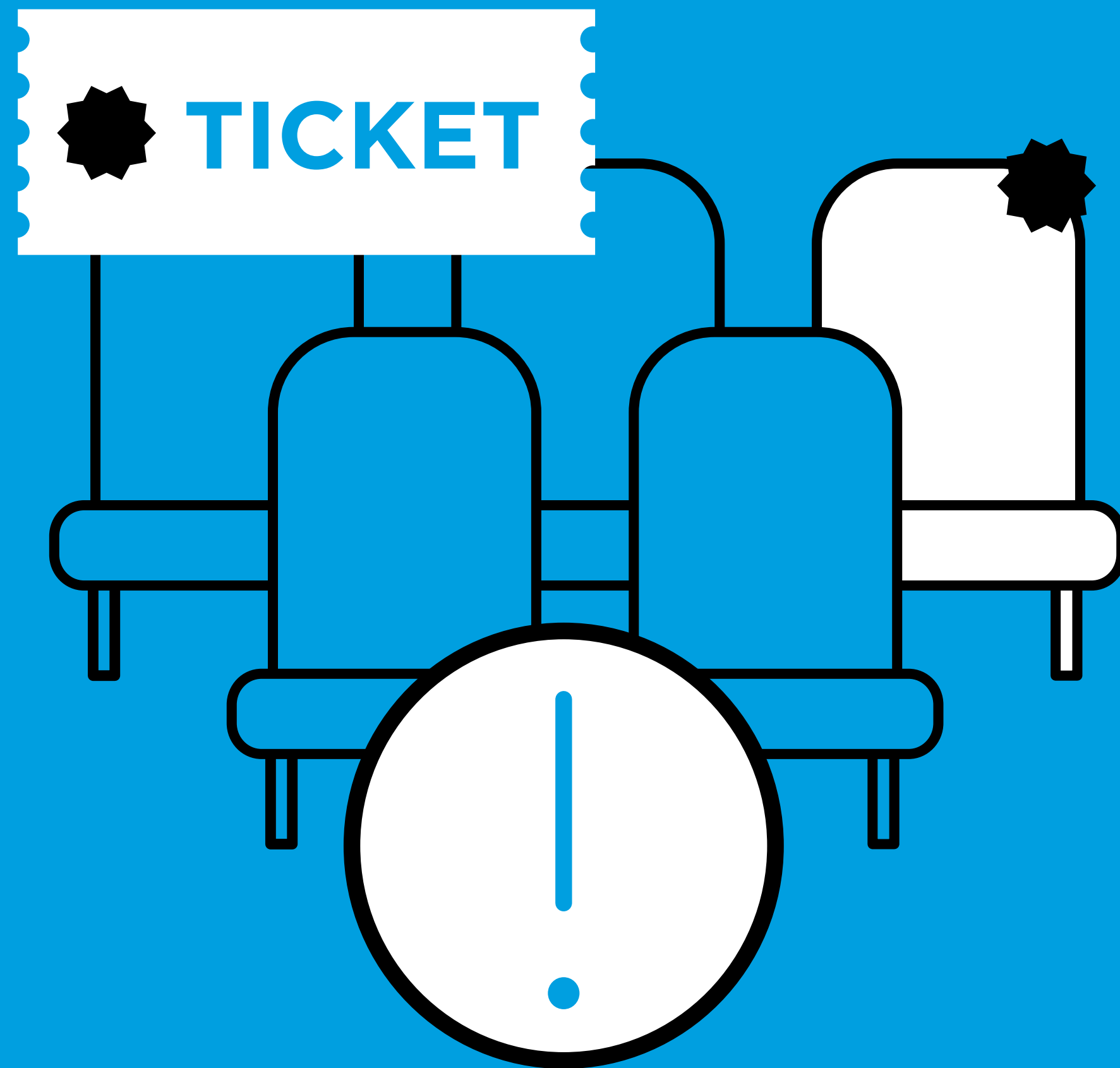
**30 MINUTES AVANT LE DÉBUT**

**DE LA REPRÉSENTATION**

**THE DOORS TO THE AUDITORIUM**

**OPEN 30 MINUTES**

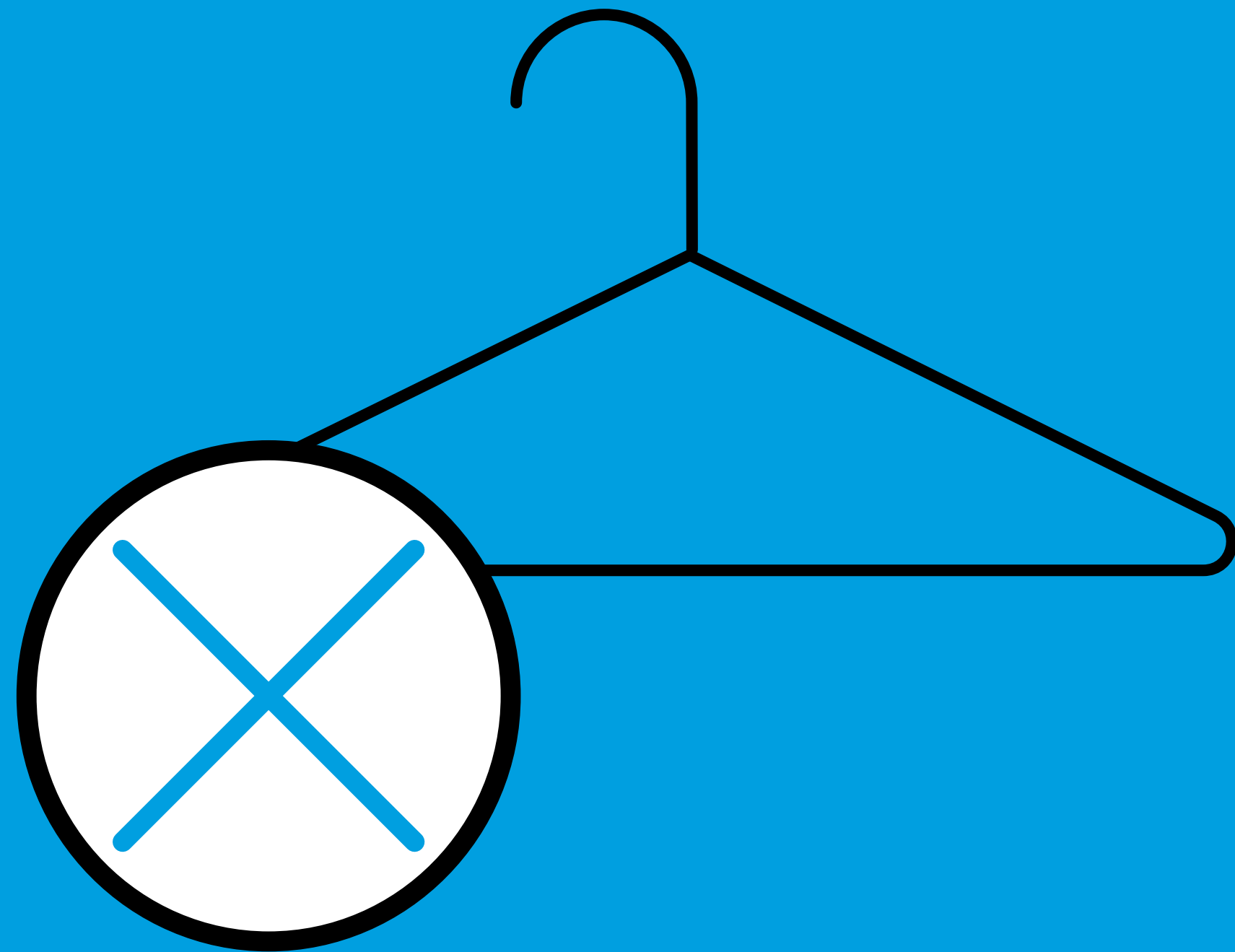
**BEFORE THE PERFORMANCE**



**VEUILLEZ VOUS ASSEOIR**

**À VOTRE PLACE ASSIGNÉE**

**PLEASE SIT ON YOUR ASSIGNED SEAT**



**LE VESTIAIRE RESTE FERMÉ**

**CLOAKROOMS REMAIN CLOSED**





**VEUILLEZ ATTENDRE**

**LES INSTRUCTIONS DU PERSONNEL**

**AVANT DE SORTIR DE LA SALLE**

**UPON LEAVING THE AUDITORIUM,**

**PLEASE WAIT FOR THE INSTRUCTIONS**

**OF OUR FRONT OF HOUSE TEAM**